

USER MANUAL



iZoom 3.0

Screen Magnifier/Reader

Support Email: support@issist.com

Issist Assistive Technologies Inc.

www.issist.com

Table of Contents

1.0	Installation.....	4
2.0	Starting/Closing iZoom.....	5
3.0	Magnification	
3.1	Enable/Disable Magnification.....	8
3.2	Increase/Decrease Magnification.....	8
3.3	Zoom Modes.....	9
3.4	Adjusting Lens Size/Position.....	11
3.5	Floating Window.....	12
3.6	Mouse Enhancements.....	13
3.7	Locators.....	14
3.8	Color Enhancements.....	16
3.9	Smoothing.....	17
3.10	SmartAlign.....	18
3.11	Scroll Padding.....	19
3.12	Zoom Scroll Bars.....	20
3.13	Focus Highlighting.....	21

4.0 Speech

4.1 Voice Properties.....22

4.2 Echo Settings.....23

4.3 Narration.....25

5.0 Other Settings

5.1 Hot-Keys.....26

5.2 Start iZoom on startup.....28

5.3 Transferring License.....28

Introduction

iZoom is a Screen Magnifier/Reader designed to help those with visual impairments. iZoom can enhance various aspects of your screen such as size, color, mouse pointer etc. to make your computing experience easier. It comes in various versions such as a downloadable version known as iZoom Standard, a flash drive known as iZoom USB and more. For a comprehensive listing of our iZoom line of products, visit www.issist.com

1.0 Installation

iZoom USB, iZoom NET and iZoom WEB require no installation. However, iZoom Standard does.

If you have purchased iZoom Standard, double click the setup file provided as shown in Figure 1.

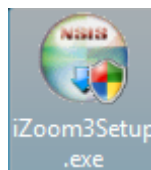


Figure 1

If a security warning dialog appears, press “Run”. Then follow the on screen instructions to complete installation.

2.0 Starting/Closing iZoom

Starting iZoom

If you are using:

iZoom Standard: Double click the iZoom icon on your desktop as shown in Figure 2.



Figure 2

iZoom USB: Insert iZoom USB drive into any available USB port. If your operating system is:

- **Windows XP:** iZoom will automatically start in a few seconds.
- **Windows Vista:** A prompt will appear as shown in Figure 3. Press “Run LaunchU3.exe” and iZoom will start. To prevent dialog from appearing again, check “Always do this for software and games”.

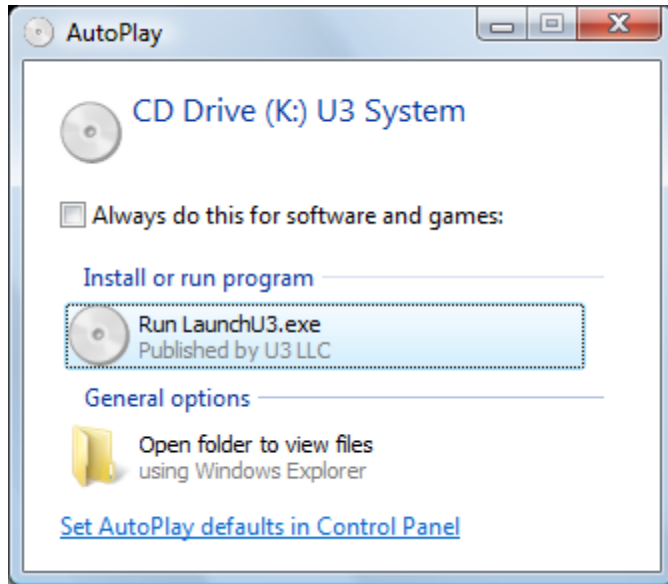


Figure 3

Closing iZoom

All versions of iZoom must be closed by pressing the X button on the top right of the iZoom window as shown in Figure 4. Alternatively, iZoom may be closed using a shortcut key. Refer to section **5.1 HotKeys** for details.

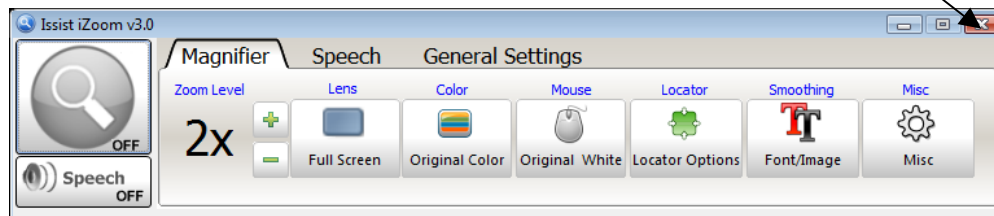


Figure 4

If you are running iZoom USB, **DO NOT** simply pull out the USB drive after closing or while running iZoom. Doing so may corrupt the data on the USB drive. To safely eject the USB drive click, close iZoom as mentioned above, then press the U3 icon at the bottom right of your screen (on the taskbar) as shown in Figure 5. A window will appear as shown in Figure 6. Click the “Eject” button at the bottom right. A message will appear shortly indicating it is safe to remove the U3 device. You may then pull out the USB drive.



Figure 5



Figure 6

3.0 Magnification

3.1 Enable/Disable Magnification

By default, iZoom starts with zooming enabled. The screen will be magnified and only a part of the unmagnified screen will be visible at any given time. Press the large magnifying glass icon as shown in Figure 7 to Enable/Disable magnification. Figure 8 shows a grey magnifying glass, indicating magnification is disabled.





Figure 7



Figure 8

3.2 Increase/Decrease Magnification

iZoom provides magnification levels from 1X to 36X. Magnification occurs in increments of 0.5X until 3X. Above 3X, it occurs in increments of 1X.

Increase the magnification pressing the  button. Decrease the magnification by pressing the  button.

3.3 Zoom Modes

iZoom offers 8 zooming modes. The default zoom mode is Full Screen. To change the zoom mode, click the “Lens” button on the iZoom window. As shown in Figure 9, the iZoom window will expand vertically revealing additional zoom modes.

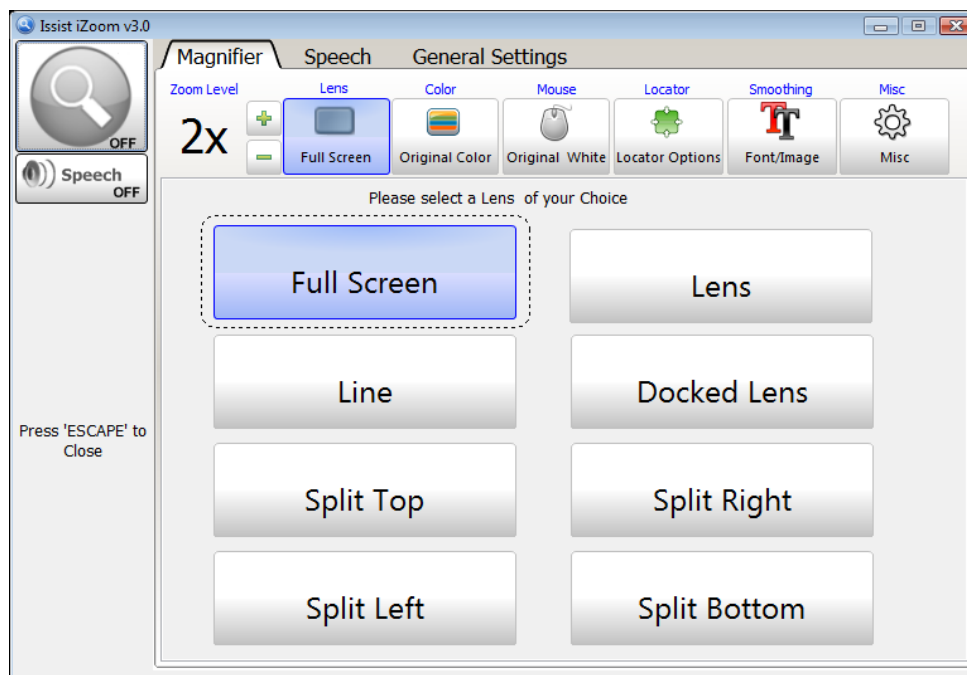


Figure 9

Full Screen: The magnification area will occupy the whole screen and only a portion of the unmagnified screen will be visible at any given time.

Lens: The magnification area will be a rectangular area following the mouse cursor, magnifying everything under it. The unmagnified screen will be visible at all times. Once lens mode is selected, the size of the rectangular area can be adjusted by pressing the “Adjust lens” button. See section 3.4 for details.

Line: The magnification area will be a wide line across the screen, following the mouse cursor. Areas under the line will appear magnified, while areas outside the line will remain unmagnified.

Docked Lens: The magnification area will be a rectangle and all items around the mouse pointer will appear magnified. The rectangular area itself will not change position. Once docked lens is selected, the position and size of the rectangular area can be adjusted by pressing the “Adjust lens” button. See section 3.4 for details.

Split Top Lens: The screen will be split into equal two areas. The unmagnified view will remain in the bottom half, while the magnified view will remain in the top half.

Split Bottom Lens: The screen will be split into equal two areas. The magnified view will remain in the bottom half, while the unmagnified view will remain in the top half.

Split Left Lens: The screen will be split into equal two areas. The magnified view will remain in the left half, while the unmagnified view will remain in the right half.

Split Right Lens: The screen will be split into equal two areas. The magnified view will remain in the right half, while the unmagnified view will remain in the left half.

3.4 Adjusting Lens Size/Position

The Lens mode and Docked Lens Mode display a rectangular lens on the screen in which the magnified area is displayed. The size and position of this lens may be adjusted as follows.

Select Docked Lens or Lens zoom mode. A blue button will appear below the Lens button and will display “Adjust Lens” as shown in Figure 10.

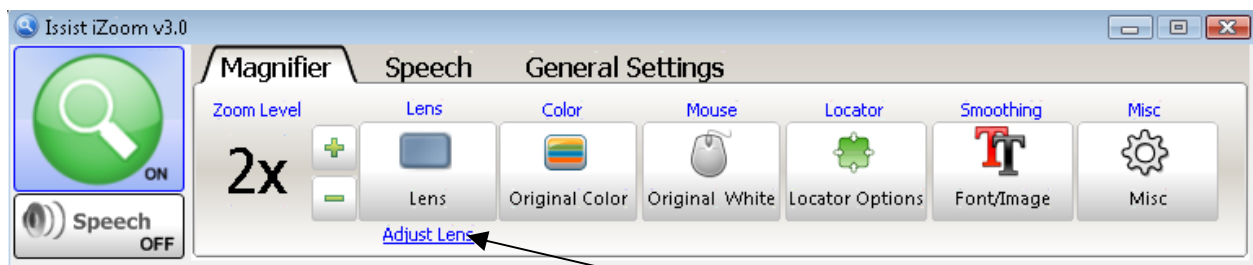


Figure 10

Select the “Adjust Lens button”. A rectangular lens will appear with red buttons on the corners. Adjust the lens to desired size and position by holding the red squares and dragging. When

done adjusting, press the Esc key of right mouse button to return to iZoom.

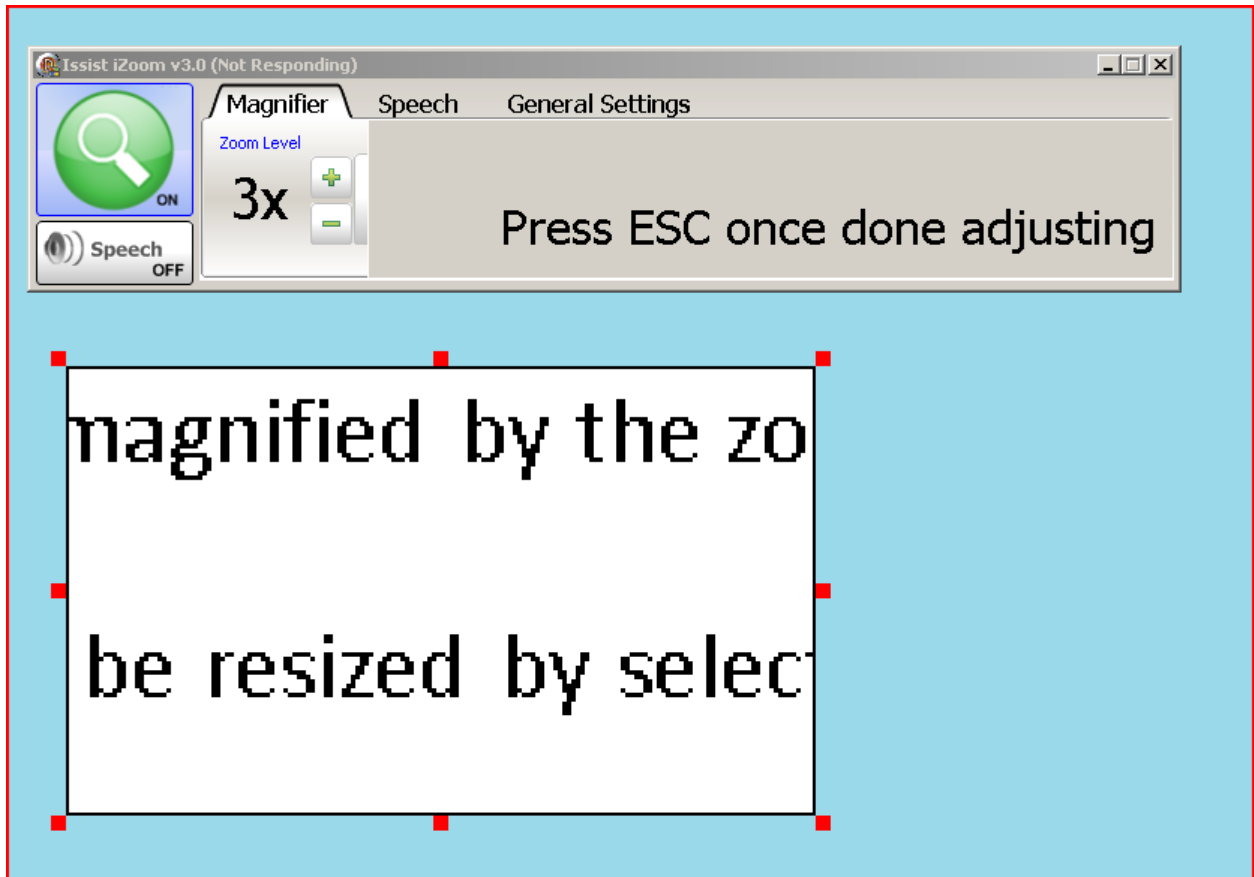


Figure 11

3.5 Floating Window

Use iZoom's Floating Window feature to lock any area of the screen and keep it in view on top of all other items of the screen.

To lock an area of the screen, hold down CTRL+ALT+SHIFT together. Drag the mouse pointer across the area you wish to lock, then release CTRL+ALT+SHIFT. The locked area will appear

in one of the 4 corners of the screen. To remove the floating window, press CTRL+ALT+SHIFT and release quickly without moving the mouse.

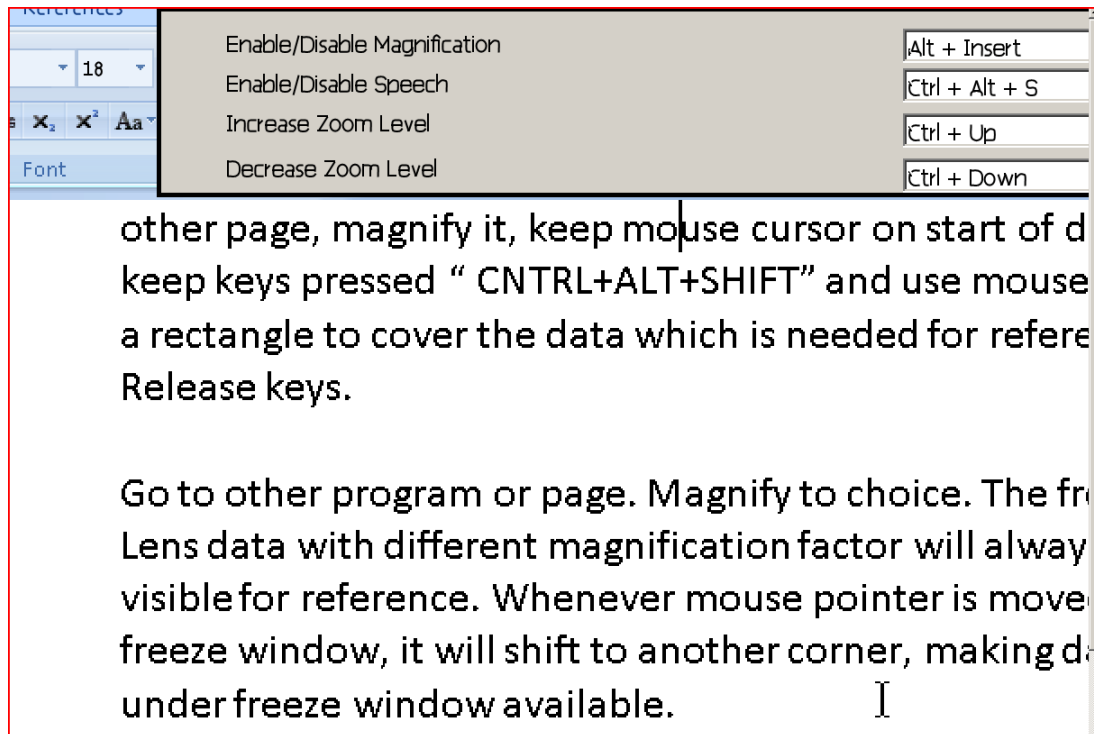


Figure 12

3.6 Mouse Enhancements

To change the appearance of the mouse, press the "Mouse" Button on the iZoom Window. The iZoom window will expand as shown in Figure 13. Select Pointer size and color based on your preference. When completed, press the Mouse button again or press the Esc key to collapse the iZoom Window to normal.

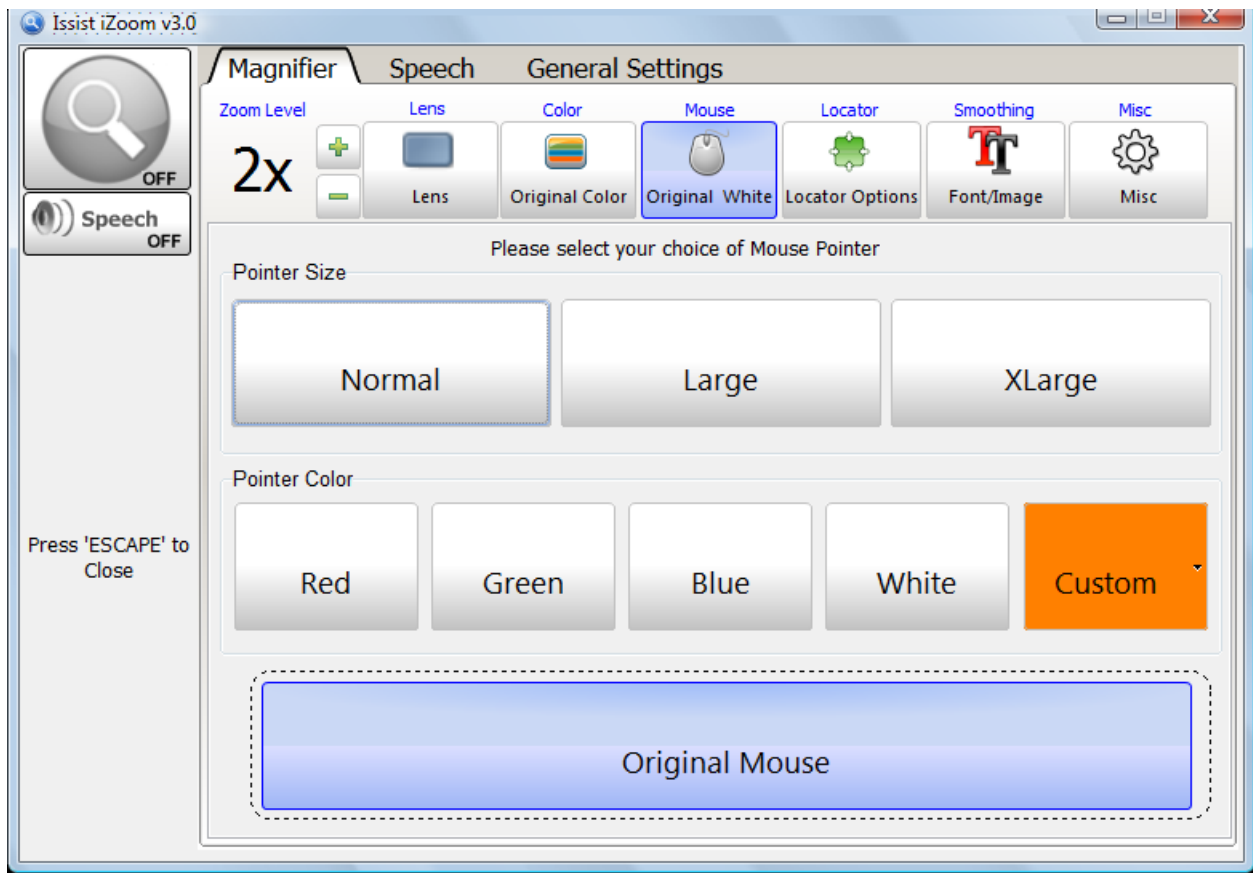


Figure 13

3.7 Locators

Locators are used to help locate the mouse pointer. To select locators, press the “Locator” button on the iZoom Window. The iZoom Window will expand as shown in Figure 14.

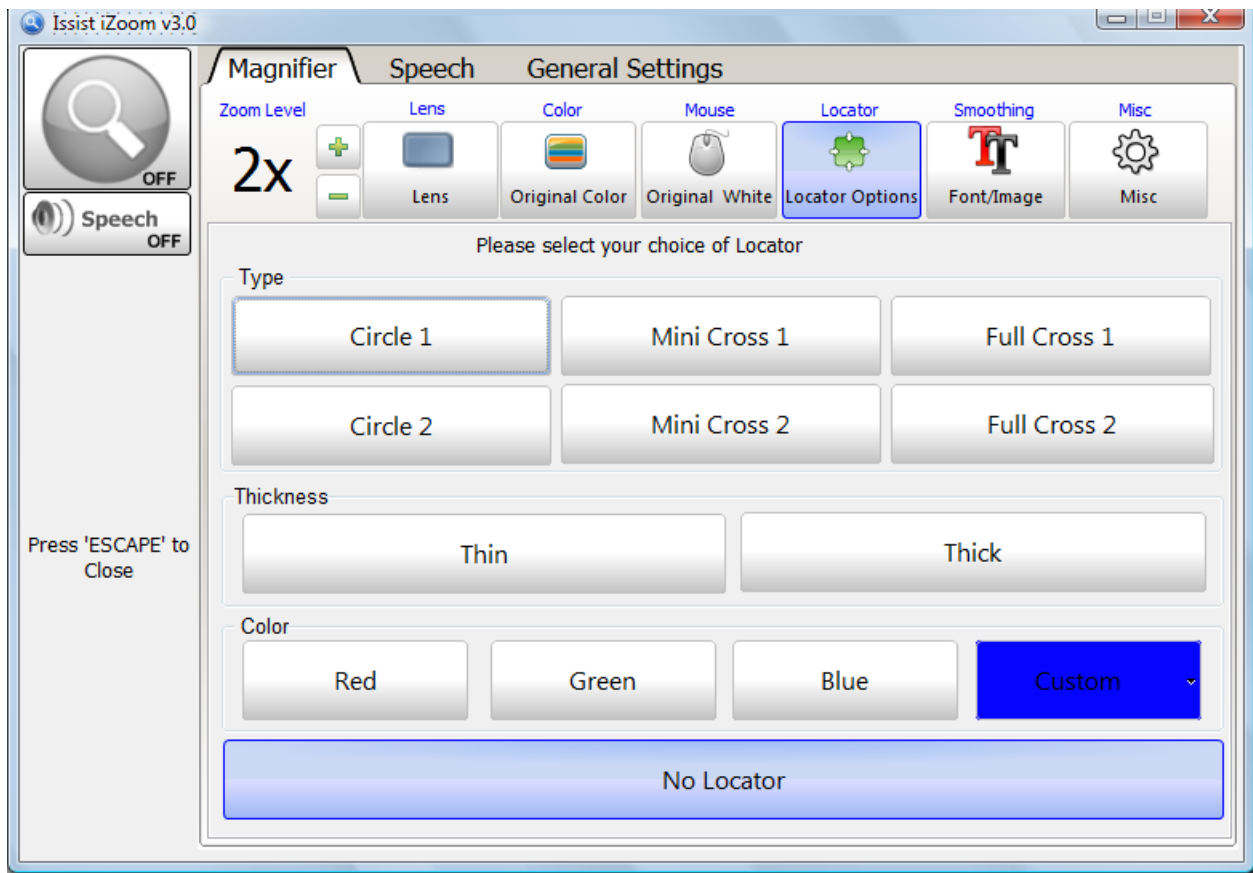


Figure 14

Locator type has 6 options. Circle 1 will display a circle around the mouse pointer at all times. Circle 2 will display a circle only when the mouse is moving. Mini Cross 1 will display a small cross around the mouse pointer at all times. Mini Cross 2 will display a small cross only when the mouse is moving. Full Cross 1 will display a full cross around the mouse pointer at all times. Full Cross 2 will display a full cross only when the mouse is moving.

Use the Thickness and Color options to set thickness and Color of the locator. Once done, press the “Color” button or the “Esc” key to collapse the iZoom Window to normal.

3.8 Color Enhancements

To adjust the screen colors can be adjusted to reduce glare, replace colors etc. iZoom supports various preset color schemes and also supports creation of custom color schemes. To select a color scheme, press the “Color” button on the iZoom Window. The iZoom Window will expand as shown in Figure 15.

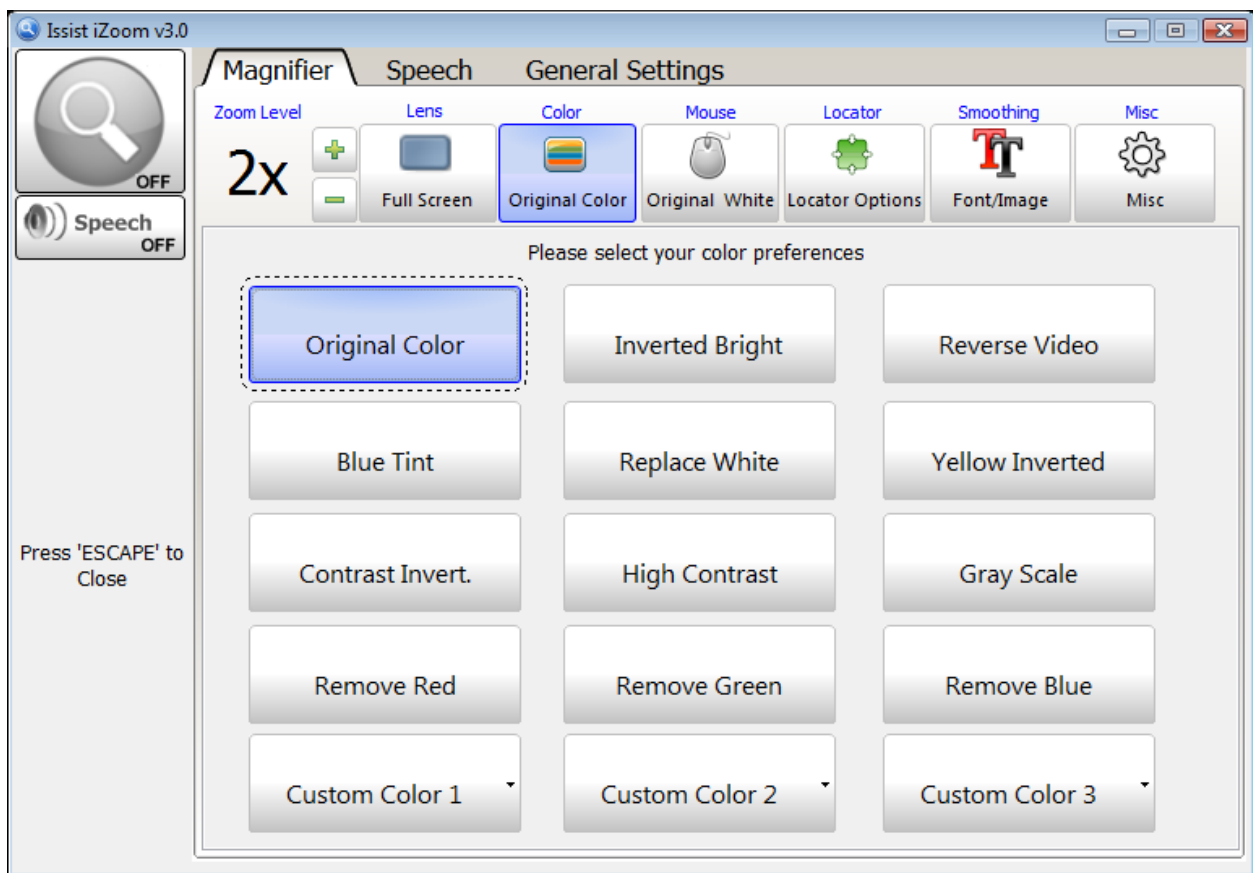


Figure 15

Original Colors is the default color scheme. It will not make any changes to the screen colors. Try the different color schemes to find a suitable fit. Press the “Color” button or the Esc key when done.

3.9 Smoothing

iZoom supports Font and Image smoothing. These options improve the font and image quality. However, both of these options require more computing power and cause iZoom to run slower on older computers. Font smoothing may cause overlapped text in some circumstances. Disable font smoothing during such situations to resolve the issue.

By default, Image Smoothing is Off and font smoothing is On. To change these options, click the “Smoothing” button on the iZoom Window. The iZoom Window will expand revealing the Image and Font Smoothing options. Press the “Smoothing” button or the Esc key when done.

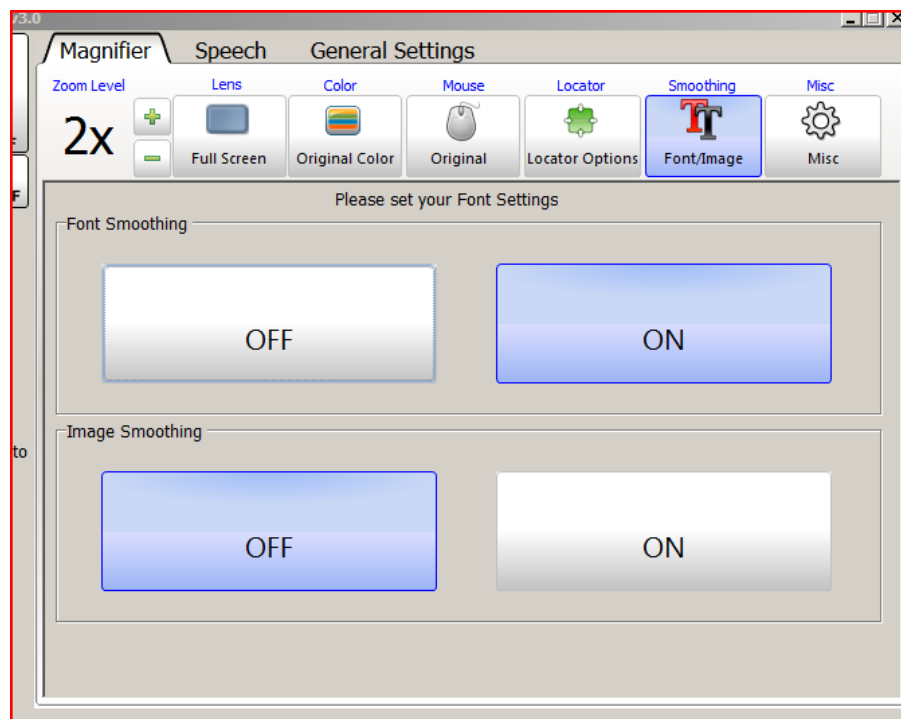


Figure 16

3.10 SmartAlign

Use SmartAlign to swiftly realign text on web pages in Internet Explorer or Firefox.

Place mouse pointer over text to be read. Hold down left mouse button on text for half a second. The computer will produce a short beep, indicating iZoom has detected request to realign the webpage. If the webpage is large, it may take a few seconds before the reformatted web page will appear on the screen. Use Up/Down arrow keys to scroll through text. Alternatively, use Page Up/Page Down to scroll. Once done reading, move mouse to exit from SmartAlign.



Figure 17. An example of SmartAlign

3.11 Scroll Padding

Scroll Padding determines how far the mouse must be moved to the edge of the screen before scrolling will occur. Setting scroll padding to 0% will require movement of the mouse to the absolute edge of the magnified view in order to scroll. Setting scroll padding to 50% will result in scrolling even with the slightest movement of the mouse. Experiment with scroll padding to find preferred setting.

To change scroll padding, press the “Misc” button on the iZoom Window. Select the “Preferences” tab as shown in Figure 18. Use the “Scroll Padding” slider to set scroll padding. Press the “Misc” button or the “Esc” key when done.

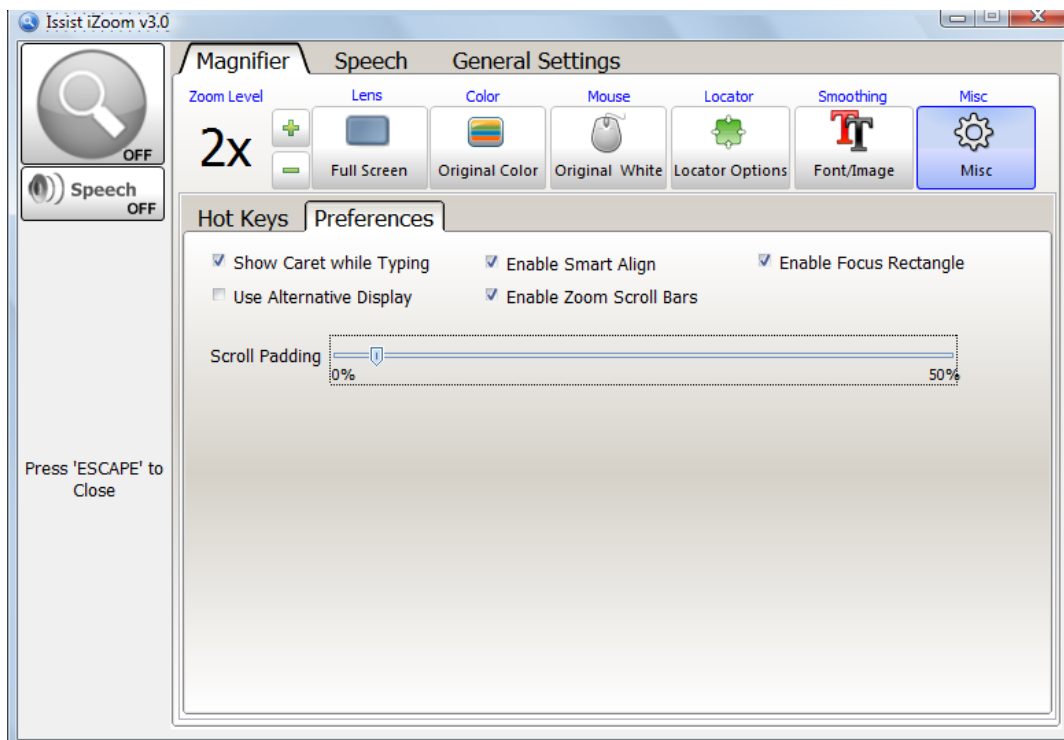


Figure 18

3.12 Zoom Scroll Bars

Use Zoom Scroll Bars to determine location of original screen being magnified.

Zoom scroll bars appear as 2 red rectangles at the bottom and right of the screen. As the magnified view is scrolled up, the zoom vertical zoom scroll bar moves up and vice versa. As the magnified view is scrolled right, the horizontal zoom scroll bar moves right and vice versa. The intersection of the scroll bars is the area or the original screen being viewed.

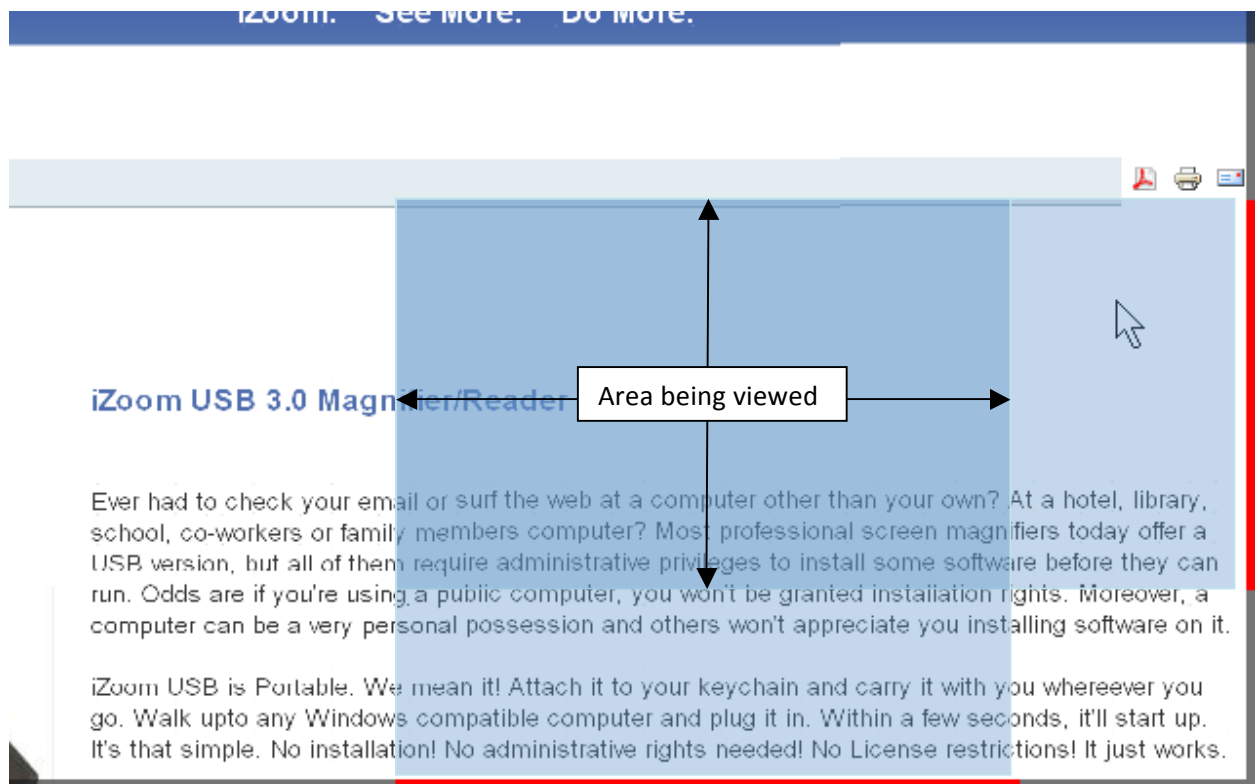


Figure 19

To Enable/Disable zoom scroll bars, click the “Misc” button in the iZoom window. Click the “Preferences” tab as shown in Figure 20. Use the “Zoom Scroll Bars” check box to enable/disable zoom scroll bars. Press the “Misc” button or the Esc key when done.

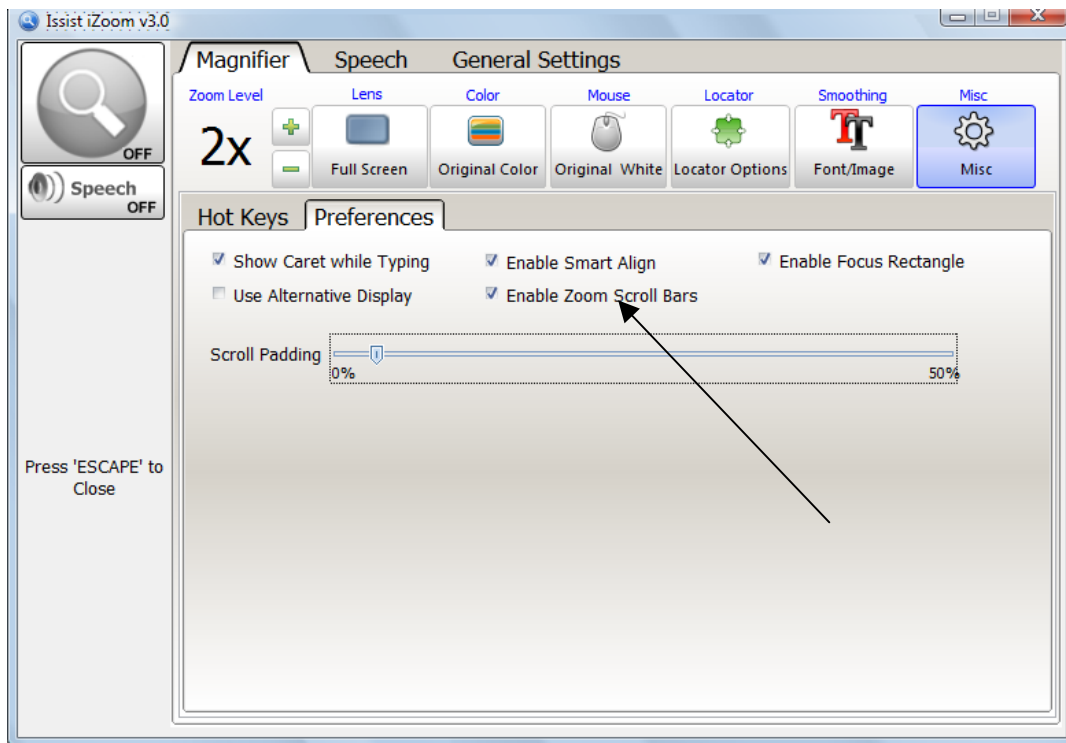


Figure 20

3.14 Focus Highlighting

When using the keyboard for navigation, focus highlighting displays a red rectangle around the selected object, making it easier to find. To Enable/Disable focus highlighting, click the “Misc” button in the iZoom window. Click the “Preferences” tab as shown in Figure 20. Use the “Enable Focus rectangle” check box to enable/disable focus highlighting. Press the “Misc” button or the Esc key when done.

4.0 Speech

Use the Speech button to enable/disable speech.

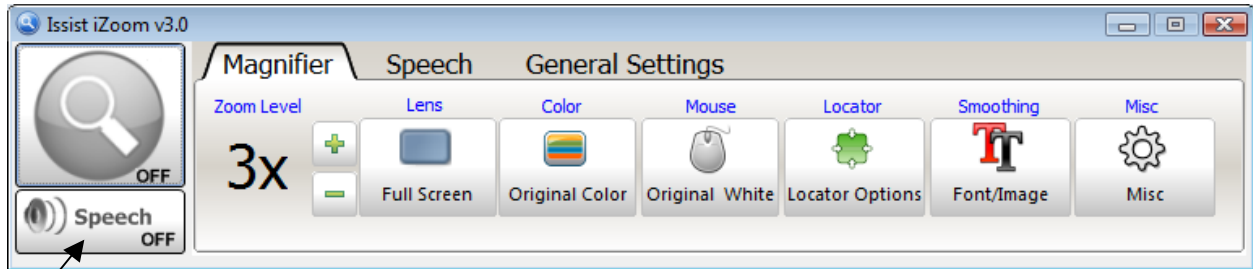


Figure 21

4.1 Voice Properties

iZoom uses the default voice in windows. Learn how to [configure a different voice in windows](#)

To adjust the speed/volume of the voice, click the “Speech” tab on the iZoom window. Use the sliders to increase/decrease speech rate/volume.

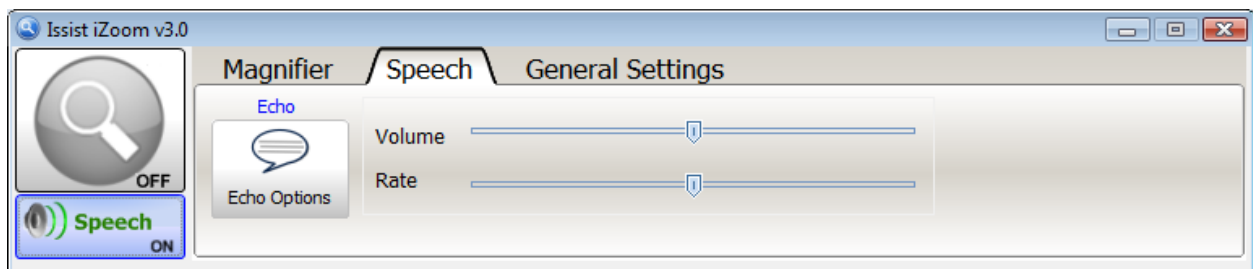


Figure 22

4.2 Echo Settings

Echo settings control what iZoom speaks when you type and navigate various programs. These settings allow you to control the amount of information spoken according to your personal needs.

To change Echo settings, press the “Echo Options” button in control panel under the speech tab as shown in Figure 23.

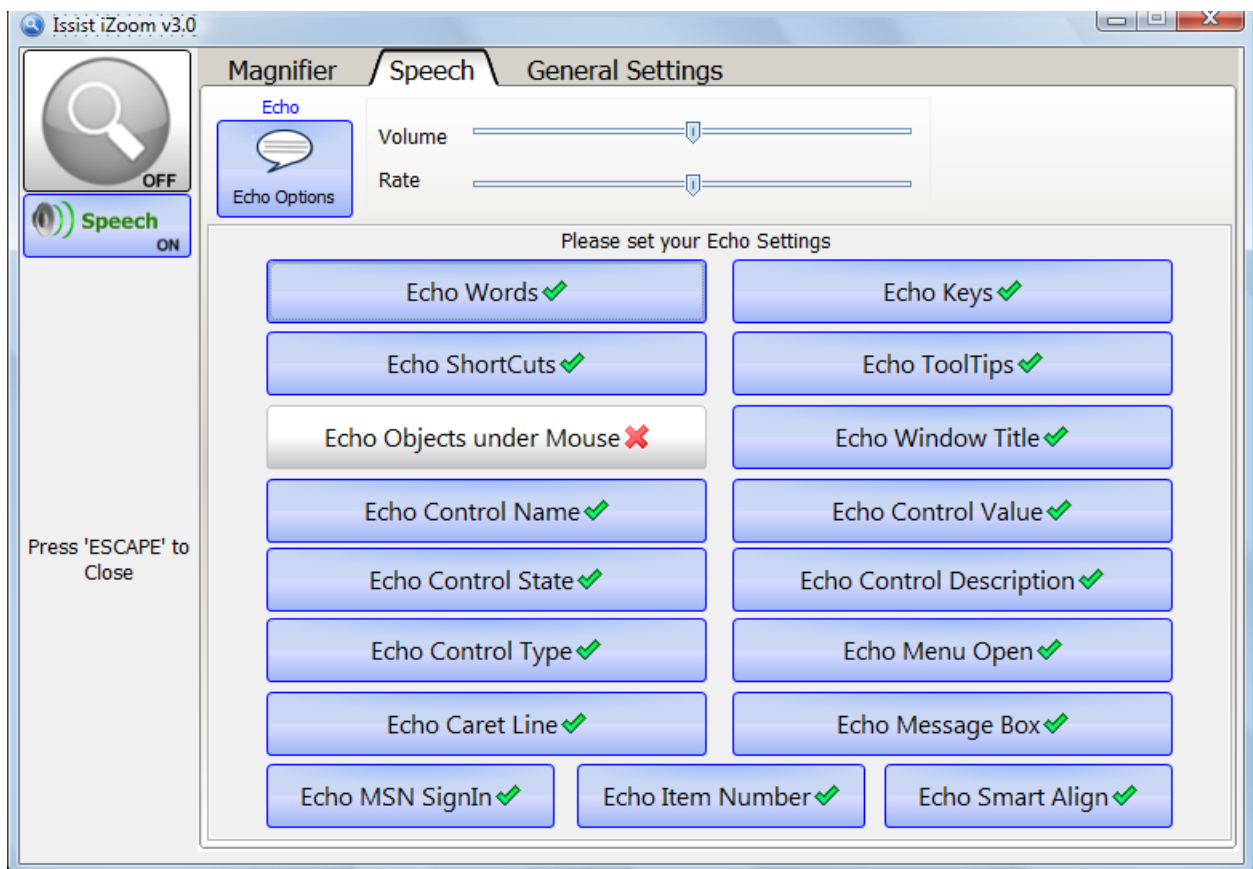


Figure 23

Echo Words: Echo Words allows speaks each word as it's typed.

Echo Shortcuts: Announces the shortcut key for a menu item, such as "Ctrl + S."

Echo object under Mouse: Mouse echo will read text under the mouse pointer.

Echo Control Name: Announces the name of the active control.

Echo Control State: Announces the state of the active control, such as "checked" and "disabled."

Echo Control Type: Announces the type of the active control, such as "button" or "checkbox."

Echo Caret Line: Speaks the text on the current line when the caret moves to a new line.

Echo MSN SignIn: Speaks the name of the contact who signs into MSN.

Echo Keys: Echo Keys allows you to hear the individual keys that you type. Keys are spoken as soon as you type it.

Echo Tooltips: When a tool tip appears beneath the pointer, it is spoken.

Echo Window Title: The content of a window title is spoken, when a window becomes active.

Echo Control Value: Announces the current value of the active control.

Echo Control Description: Speaks the description of the active control.

Echo Menu Open: When a menu is open, title of menu is spoken.

Echo Message Box: Announces the content (text) of a message box when activated.

Echo Item Number: Announces the item number in a list of controls followed by the total number of items in the list.

Echo SmartAlign: Speaks the text displayed on the screen when SmartAlign is activated.

4.3 Narration

Narration speaks web pages in Internet Explorer, text documents in Notepad and Microsoft Word documents. To narrate, ensure speech is enabled. Then place mouse over text to start speaking from and press the narration shortcut key. By default the hotkey is “Ctrl+Shift+Z”. Narration will begin within a few seconds depending on the length of the document. To stop narration, press the same shortcut key again.

If you wish to work on another document while hearing the text from current document, minimize the current document by using “Windows Key + M”. Open another document, magnify if required and work on it.

5.0 Other Settings

5.1 HotKeys

Hotkeys (also known as shortcut keys) allow controlling iZoom settings through keyboard shortcuts. iZoom uses the following Hotkeys by default. In order to set custom Hotkeys, click the “Misc” icon on the iZoom Window. A drop down will appear as shown in Figure 24. To change a hotkey, use the textboxes next to the feature and enter the new hotkey. Press “Apply Hotkeys” when done.

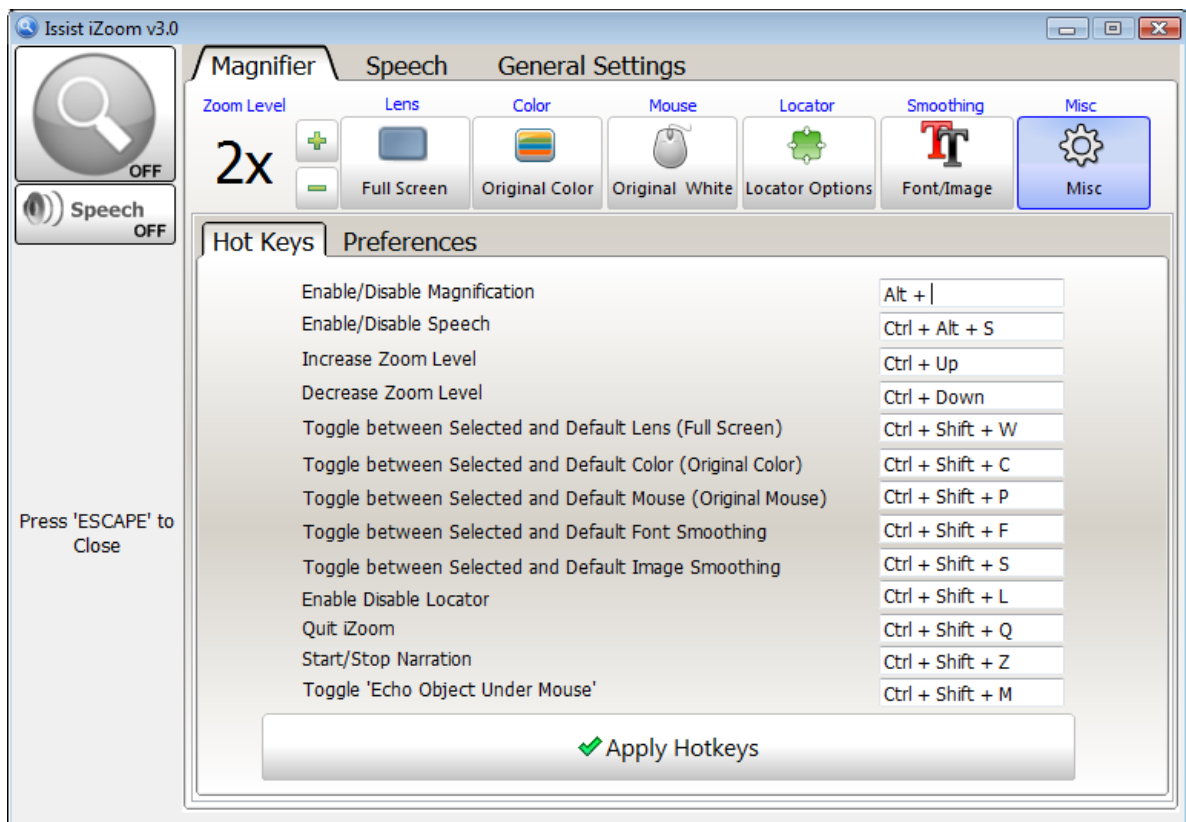


Figure 24

Default Hotkeys

Feature	Hotkey
Enable/Disable Magnification	Alt+Insert
Enable/Disable Speech	Ctrl+Alt+S
Increase Zoom Level	Ctrl+Up
Decrease Zoom Level	Ctrl+Down
Toggle between selected and default lens	Ctrl+Shift+W
Toggle between selected and default color	Ctrl+Shift+C
Toggle between selected and default mouse	Ctrl+Shift+P
Toggle font smoothing	Ctrl+Shift+F
Toggle Image Smoothing	Ctrl+Shift+S
Toggle Locator	Ctrl+Shift+L
Quit iZoom	Ctrl+Shift+Q
Start/Stop Narration	Ctrl+Shift+Z
Toggle Echo objects under mouse	Ctrl+Shift+M

5.2 Start iZoom on Startup

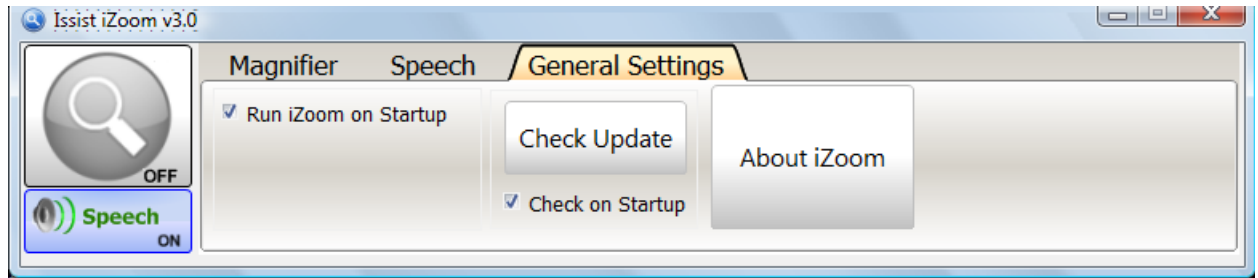


Figure 25

Select the “General Settings” tab and check “Run iZoom on Startup” to start iZoom every time Windows starts. This option is selected by default.

5.3 Transferring License

iZoom Standard requires a license to function. If you wish to move your license of iZoom to another machine, you must transfer your license before registering iZoom on another machine. To transfer your license, click the “General Settings” tab on the iZoom Window. Click “About iZoom”. If iZoom Standard is registered on your machine, a button saying “Remove Registration from this Computer” will be visible. Click the button, then register iZoom Standard on another machine.

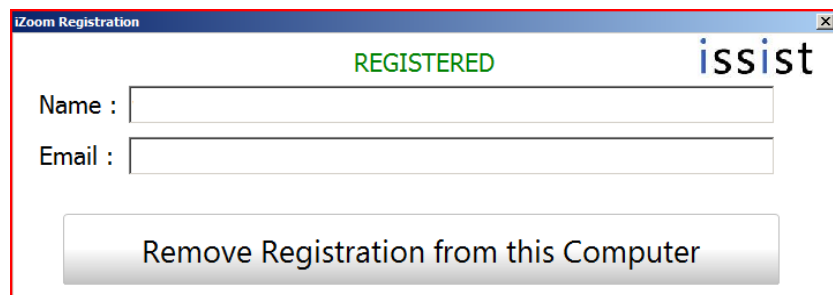


Figure 26